

# ColorBurst® Quick Start Guide

## ColorBurst 9 for Windows

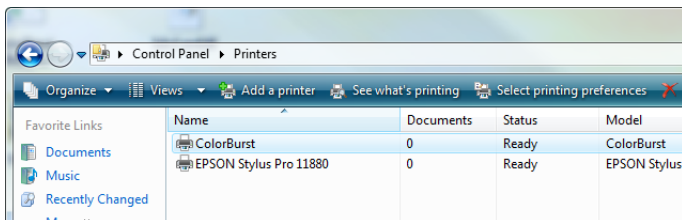
### Installation

1. Make sure that your computer is running Windows® XP or Windows Vista®.
2. Plug the supplied ColorBurst dongle into any available USB port or USB hub.
3. Load the ColorBurst Installation DVD in your computer and run the ColorBurst installer.
4. When installation starts, follow the instructions on your screen. The Aladdin HASP driver automatically begins installation after the ColorBurst RIP installation is complete. A ColorBurst printer is created to print to ColorBurst from other applications.



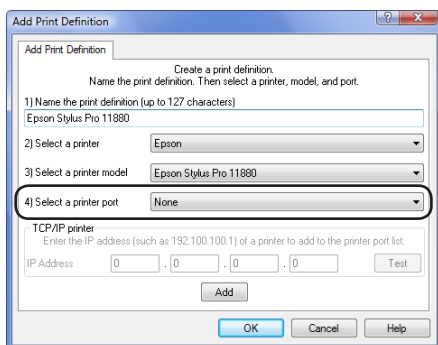
**Windows XP:** At the end of the installation process, a dialog with the message “Digital Signature Not Found” appears. Click “Yes” to continue the installation.

5. After installation is complete, open your computer’s Printers list and make sure the ColorBurst printer and your printer driver have a “Ready” status. A printer with an “Offline” status will not be recognized by ColorBurst.

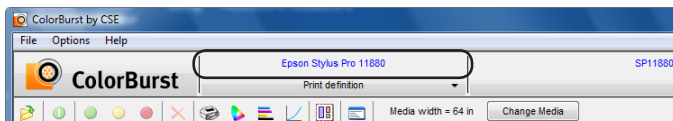


## Configuration

1. Launch ColorBurst from the desktop shortcut. ColorBurst is installed in your C: drive unless specified otherwise.
2. Register your copy of ColorBurst (*an internet connection is required.*) If you click Register Later, the registration window will pop up every few hours until registration is completed.
3. Click the Print Definition toolbar menu and select Add to add a printer connection. Type in a name for the printer definition and select a printer and printer model in the first two pulldown menus.  
**USB connection:** In the printer port pulldown select the printer driver provided by your printer's manufacturer.  
**Ethernet connection:** In the printer port pulldown select TCP/IP printer. Enter your printer's IP Address in TCP/IP printer fields. Click the Test button to make sure the IP Address is valid.
4. Click OK to close the Add Print Definition dialog and save your printer connection.



5. Make sure your Print Definition is selected as the current Print Definition in the toolbar. When selected, it appears in blue text above the menu.

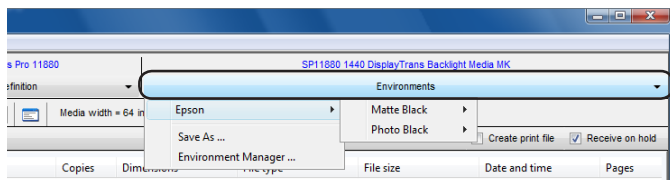


6. **Recommended:** If this is the first time launching ColorBurst, please Exit the program to create your initial settings (ini) file, and then relaunch ColorBurst.

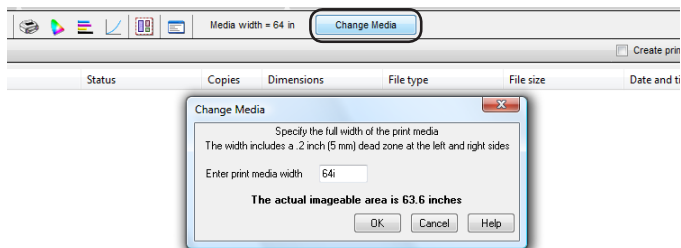
---

## Basic Printing from ColorBurst

1. **Select an environment.** Environments contain ColorBurst settings optimized for specific medias. Use the Environments toolbar menu to select an environment for your printer that matches the media you will be printing on. Environment names include media and print settings such as media type, resolution, and number of passes.



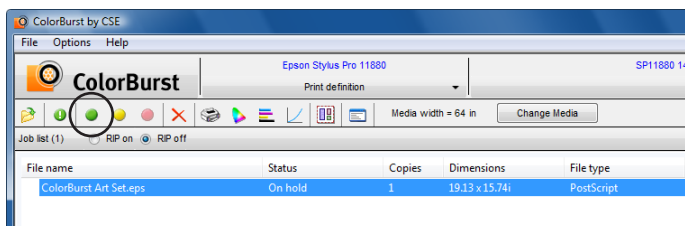
2. **Set the Media Width.** Click the Change Media button in the toolbar. Type in the width of your media and click OK. The new Media Width is displayed in the toolbar.



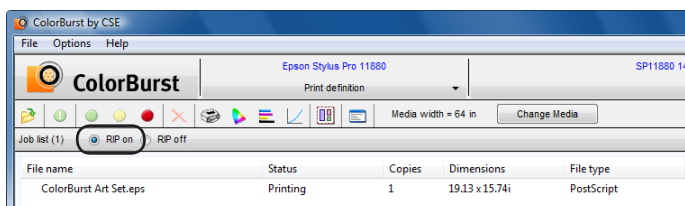
3. **Open a file.** Click File menu > Open (or click the Open button in the toolbar) and select any valid image file (JPG, TIFF, EPS, PDF, PS, etc.). The file is placed in the Job List. If Receive on Hold

is selected in the Job Manager (it is on by default) your file will have a status of "On Hold."

4. **Activate your file.** If your file is On Hold, select your file in the Job List and click the green Activate button in the Job Manager toolbar to change the status to "Ready."



5. **Click RIP On.** When you click RIP On, ColorBurst begins processing the file at the top of the Job List. If your printer is connected properly, and your file has a "Ready" status, your file starts to print. After printing, the file moves to the Done List.



For more information about printing files and layouts from ColorBurst, please refer to the ColorBurst User Manual PDF file installed in your ColorBurst folder.